

# SCLTRC

Susquehanna County Long Term Recovery Committee Inc.

The SCLTRC was formed in 2011 in response to devastation and destruction that occurred because of Hurricane Irene and Tropical Storm Lee.

A complete listing of SCLTRC's By-Laws are available upon request.

**Susquehanna County Long Term Recovery Committee, Inc.**

P.O. Box 194

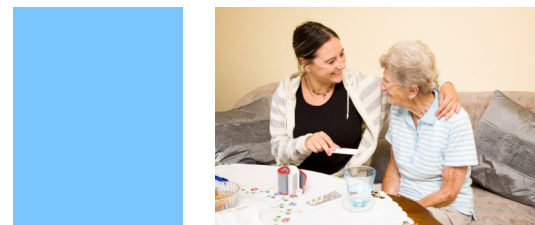
New Milford, PA 18834

570-279-0076

*Sponsored by United Way of Susquehanna County through generous Shell Long Term Recovery Grant*



**Assisting residents of Susquehanna County  
to recover from disaster.**



# SCLTRC

Susquehanna County Long Term Recovery Committee, Inc.

## Mission Statement

The Susquehanna County Long Term Recovery Committee, Inc. (SCLTRC) is a domestic non-profit corporation in Pennsylvania, which works to address the unmet disaster-related recovery needs of residents of Susquehanna County in response to disaster specified by the committee.

## We strive to

- ◆ Provide residents of Susquehanna County long-term recovery by connecting them to community resources for physical, material, emotional, spiritual, and volunteer support.
- ◆ Provide additional assistance to individuals affected by disaster who do not have adequate personal resources to meet basic needs as a result of the disaster, and who have exhausted resources provided by the government and other relief organizations.
- ◆ Jointly resolve cases involving disaster-caused recovery needs in a consistent, fair, just and equitable manner.
- ◆ Facilitate access to services and pursue advocacy for people most vulnerable to not having their needs met by the public recovery process.
- ◆ As resources permit, the SCLTRC will facilitate the recovery of the local community.
- ◆ We respond to needs not met by established relief systems and other disaster recovery programs.

We provide resources to those affected by disaster regardless of race, creed, color, gender, disability, religious preference or sexual orientation.

## Purpose

The purpose of the SCLTRC is to coordinate and facilitate more effective disaster response by incorporating the following principles:

- ◆ Cooperation
- ◆ Coordination
- ◆ Communication
- ◆ Collaboration
- ◆ Education
- ◆ Convening Mechanisms
- ◆ Advocacy

## Membership

The SCLTRC is a voluntary umbrella organization comprised of a combination of public and private organizations, religious groups, faith communities, individuals, and government agencies.

## Important Contact Information

### American Red Cross Susquehanna & Wyoming Counties Chapter

Phone: 1-800-422-7677

Website: [www.redcross.org/pa/montrose](http://www.redcross.org/pa/montrose)

### Susquehanna County Emergency Management Agency

Phone: 570-278-4600

Website: [www.susqco.com](http://www.susqco.com)

### Pennsylvania Emergency Management Agency

Phone: 717-651-2171

Website: [www.pema.state.pa.us](http://www.pema.state.pa.us)

### Federal Emergency Management Agency

Phone: (800) 621-FEMA (3362)

Website: [www.fema.gov](http://www.fema.gov)

